

BUILDING TRUST



FROM SHELF TO SITE



360° SIKA SOLUTIONS

for all your projects

- Tile Adhesives and Grouts
- Waterproofing Solutions
- Concrete Admixtures
- Sealing & Bonding
- Repair and Protection
- Structural Strengthening
- Flooring
- Others

SIKA'S FULL RANGE OF SOLUTIONS

Sika operates in the eight target markets – Concrete, Waterproofing, Roofing, Flooring, Sealing & Bonding, Engineered Refurbishment, Building Finishing and Industry – delivering its customers innovative products and systems that boost the efficiency, durability, safety and aesthetic appeal of the buildings, infrastructure facilities, vehicles and other industrial installations.

Whether you are creating the structure of tomorrow or extending the lifecycle of the existing one, Sika provides you with technologically advanced, tailor-made solutions to suit your most challenging project requirements. Our products always comply with the latest industry standards and regulations, giving you the complete peace of mind and the reassurance of working with a reliable manufacturer.



WATERPROOFING



CONCRETE



ENGINEERED REFURBISHMENT



SEALING AND BONDING



FLOORING



ROOFING



BUILDING FINISHING



INDUSTRY



CONTENTS

Waterproofing

Sikalite®	04
Sika Plug®	05
Sika Cemflex®	06
Sika Seal® - 105	07
SikaTop® Seal-107®	08
SikaTop®-130 Flex	09
Sika Waterbars®	10
SikaBit® PRO-45	11
Sika® WP Shield Primer.....	12
Sika® RainTite® Kit	13
SikaMur® InjectoCream 100	14
Sika MonoTop® -163 Migrating	15
SikaSwell® S-2	16
SikaSwell® A - 2005	17
SikaControl®-110 WT KE	18

Concrete Admixtures & Essentials

Plastocrete®-N.....	19
Sika® Fibres	20
SikaPaver® HC-2.....	21
Antisol® E	22
Sika® Separol GU -VP	23

Sealing & Bonding

Sikaflex® - 11 FC+	24
Sikaflex® PRO-3	25

Repair & Protection

Sika Latex®	26
Sika MonoTop®-610	27
Sika MonoTop® -412 S	28
SikaGrout® -212.....	29
Sikadur® -31 CF Normal	30
Sikagard® -701 W	31
Sika MonoTop®-620	32

Building Finishing

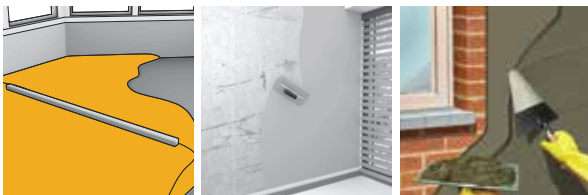
SikaCeram® -205 Granite KE	33
SikaCeram® -105 Porcelain KE	34
Sika Ceram® -80 Ceramic KE	35
Sika Ceram®-650Tile Grout KE	36
Sika Boom® P	37
Sika AnchorFix® -1.....	38

Flooring

Sikafloor® -3 QuartzTop	39
Purigo® -5S	40

*Please consult the most current local product data sheet prior to any use.

Powdered waterproofing admixture for mortars



Powdered cementitious waterproofing admixture to prevent the movement of moisture.

Uses

- Walls
- Facades
- Renders and plasters
- Flooring toppings
- Jointing mortars

Advantages

- Easy to use – in a convenient powdered form
- Watertight, but vapour permeable
- Economical
- Chloride free

Colour

Powered component - Off white

Packaging

1kg & 20kg



Sika Plug®

Fast-Setting, Portland-Cement Water-Stopper



Versatile, fast-setting, Portland-cement water-stop.

Uses

- Mortar/grout used to stop pressure leakage and seepage
- For grouting railings of wood, concrete, and metal.
- Use in sewers, wastewater treatment plants, basements, sumps, pools, tunnels, and other applications

Advantages

- Rapid set time
- Excellent bond to concrete and masonry
- Resists sewage
- Use on the vertical or horizontal
- Indoor or outdoor application

Colour

Powdered component – Grey

Packaging

5kg



Sika Cemflex®

Universal water proofing and bonding agent.
Waterproofing membrane suitable for wet-lay,
cementitious waterproofing systems.



Acrylic based emulsion which improves the water resistance and adhesion of Portland cement-based composites.

Uses

- Flowerboxes
- Reservoirs
- Shower floors and walls
- Balcony and veranda floors (Under tile s)
- Retaining walls
- Bonding coat for plasters and renders

Advantages

- Watertight
- Ideal for submerged or Subterranean waterproofing
- Good abrasion resistance
- Non-toxic
- Oil resistant
- UV stable

Colour

Liquid pale grey

Packaging

5L, 25L, 200L & 1,000L

Cemflex Membrane®

Packaging

250m roll



Sika Seal® - 105

Multipurpose water proofing mortar



Polymer modified, 2 component, multi-purpose water proofing mortar. It consists of special fillers, cement, and properly graded aggregates.

Uses

- Water/sewage works, sewage treatment plants
- Basements/lift pits
- Retaining walls/bridge structures
- Seawalls/ irrigation channels
- Swimming pools
- Balconies, kitchens, and bathrooms

Advantages

- Pre-batched components (no water added)
- Multi-purpose water proofing – polymer modified cementitious slurry
- Impermeable
- Brush or trowel applied
- Good adhesion to sound surfaces

Colour

Component A: Liquid

Component B: Powder

Packaging

25kg



SikaTop® Seal-107®

Waterproofing/damp-proofing cementitious slurry



2-part polymer modified cementitious waterproof mortar slurry comprising of a liquid polymer and a cement-based mix incorporating special admixtures.

Uses

- Interior and exterior waterproofing and damp-proofing of concrete, cementitious rendering, brickwork, and blockwork
- Protection of concrete structures against the effects of de-icing salts and freeze-thaw attack
- Rigid waterproofing of basement walls in new construction and refurbishment
- Pore / blowhole filling Sealing fine “hairline” cracks in concrete structures (not subject to movement)
- Levelling mortar for concrete repair works

Advantages

- Easy to apply by brush or in thin trowel applications
- No water required
- Prebatched components
- Hand or spray applied
- Easy and fast mixing
- Protects concrete against carbonation
- Protects against water penetration
- Non-corrosive to steel or iron
- Overpaintable

Colour

Component A: Liquid
Component B: Powder

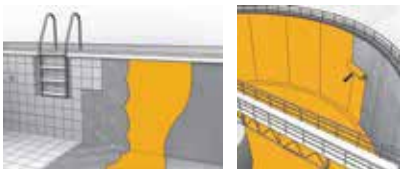
Packaging

25k



SikaTop®-130 Flex

Flexible waterproofing mortar



2 component flexible waterproofing mortar, cement based, with selected aggregates and modified polymers.

Uses

Used for waterproofing and protection of surfaces where flexibility is required to bridge small cracks. Common places where it can be used are:

- Tanks, swimming pools, canals or other elements intended to contain water, whether buried or not
- Interior waterproofing of basements
- External waterproofing of underground walls
- Repair and protection of surfaces exposed to the action of frost and de-icing salts: bridges, terraces and roof overhangs, cornices, etc.
- Protection of concrete surfaces in marine environments
- Waterproofing in contact with drinking water

Advantages

- Low modulus of elasticity, thus achieving good flexibility, reducing the risk of cracking and improving the ability to bridge shrinkage cracks and microcracks
- Waterproof and water vapour permeable
- Withstands both positive and negative pressure
- Excellent adhesion on healthy substrates including concrete, cement mortars, stone, bricks, etc.
- High resistance to de-icing salts and freeze-thaw attack
- Stops the progression of carbonation
- Good crack bridging properties
- Approved for contact with drinking water

Colour

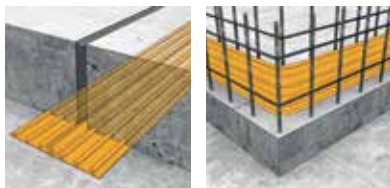
Component A: Liquid

Component B: Powder

Packaging

20kg

PVC Joint Sealing Profiles



Flexible soft PVC waterbars to seal construction and expansion joints in concrete structures. Available in different sizes and types, depending on their use.

Uses

Used to seal construction and expansion joints in water retaining structures such as:

- Reservoirs & sewage tanks
- Water tanks
- Dams
- Spillways
- Canals & tunnels
- Basements
- Underground car parks
- Swimming pools

Advantages

- Multi-rib sections of the tortuous path principal
- High quality PVC for long durability
- Suitable for high water pressure
- Easy to install (clip fastenting), easy to weld on site

Colour

Construction joint s: Grey
Expansion joint s: Yellow

Packaging

15m & 30m Rolls



SikaBit® PRO-45

Plastometric modified bituminous waterproofing membrane



APP modified, bituminous, torch-applied, waterproofing membrane. It is reinforced with a dimensionally stable non-woven polyester inlay. The underside has a thin polyethylene burn-off film for easy application. Top surface finish: mineral granules. Weight: ~4.5 kg/m².

Uses

Waterproofing membrane for:

- Retaining walls and basements
- Flat roofs under protective layers or ballast
- Balconies and terraces under tiles
- Wet areas
- Underground car parks
- Raft slabs
- As a top sheet in a double layer roofing system
- Protection of various substrates in a wide range of applications

Advantages

- Good watertightness
- Good elongation and cold flexibility
- Good mechanical properties (tensile, tear, shear)
- Good resistance to impact
- Easy to install by torching method
- Choice of primers to suit substrate and weather conditions

Colour

Membrane - Black

Packaging

1m x 10m roll



Sika® WP Shield Primer

Water based bituminous primer for SikaBit® and Sika® WP Shield range of pre-formed Bituminous Sheet Membranes

Water based modified bituminous primer which penetrates and activates the substrate and improves adhesion between the substrate and pre-formed bituminous sheet membranes SikaBit® T range.

Uses

Used as a primer for better adhesion of the torch-on and stick-on Atactic Polypropylene (APP) and Styrene Butadiene Styrene (SBS) modified bituminous waterproofing pre-formed sheet membranes.

Advantages

- Excellent bond with concrete, screed mortar, porous stones and lime-concrete substrates
- Bonds well with old bituminous subst
- Effective activation of the surface to receive the waterproofing sheet membrane
- Specially designed for tropical conditions

Colour

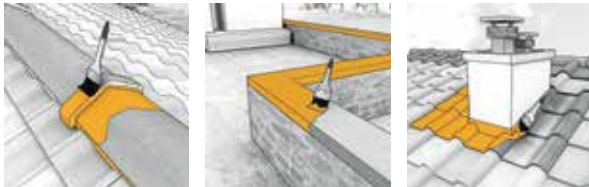
Black, low viscous liquid

Packaging

18kg

Sika® RainTite® Kit

Liquid Membrane Waterproofing System



High flexible acrylic emulsion liquid applied, to offer a simple method for waterproofing and vapour proofing for many applications and different substrates.

Uses

- Floors, under or above screeds to provide a damp proof membrane
- Roofs, as the main waterproofing on concrete or existing tiles
- PU Foam, steel and wood substrates
- Bathrooms and wet areas
- Food processing areas
- Balconies, flower boxes

Advantages

- Single pack system
- Water based compounds that can be applied even to damp backgrounds
- High flexibility, extensibility and good crack bridging properties
- Non toxic, non hazardous, solvent and plasticizer free
- Quick drying – typically touch dry in 1 hour
- Good bonding to many substrates such as concrete, blaster, brick and steel

Colour

Grey Liquid

Packaging

20kg



SikaMur® InjectoCream 100

Silane-based injectable Damp Proof Course (DPC) for rising damp treatment



A water repellent cream for controlling rising dampness.

Uses

Used to treat rising damp in almost all types of masonry walls:

- Solid brick walls
- Cavity walls
- Random form stone and rubble infill walls, etc.

Advantages

- Easy to install
- 1-component, ready to use
- Fast to install (no 'double drilling', no waiting for liquid to penetrate under pressure or gravity)
- No need for preliminary watertight sealing around the injection holes (as with pressure systems)
- Fast to inject (no waiting times required to pump in the material compared to pressure injection systems and no refilling as with gravity fed injection systems)
- Consistent application rate (easy to calculate the amount of material that will be required)
- Does not require a special expensive pump
- No risk of increased efflorescence (as with silicate rising damp treatments)

Colour

White

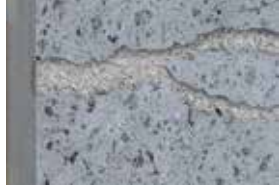
Packaging

600ml Sausage



Sika MonoTop® -163 Migrating

Cementitious Crystallization Concrete Waterproofing Slurry



1-part cementitious waterproofing slurry modified with selected aggregates and active chemicals.

Uses

- Waterproofing structures such as basements, retaining walls, lift pits etc.
- Waterproofing concrete elements
- Positive and negative waterproofing

Advantages

- Migration of active components and crystalline formation to seal capillary network
- 1-part system, only needs the addition of water
- Slurry consistency for easy and fast application by brush or low pressure spray method
- For positive and negative waterproofing
- Excellent adhesion to concrete
- Water vapour permeable
- Application on concrete and repair mortars

Colour

Grey

Packaging

25kg

SikaSwell® S-2

Polyurethane hydrophilic swellable sealant



1-part polyurethane hydrophilic sealant which swells in contact with water to seal all types of construction joints and penetrations in concrete.

Uses

Joint sealing for:

- Construction joints
- Pipe and steel work penetrations through walls and floor slabs
- Around all types of penetrations and construction joints
- Construction joints in cable ducts, etc.

Advantages

- 1-part, easy and fast to apply
- Highly economical joint sealing solution compared to other systems
- Versatile solution for joints and details
- Optimised expansion rate, no damage to fresh concrete
- Permanently water resistant (wet & dry cycles)
- Good adhesion to various substrates

Colour

Oxide red

Packaging

600ml



SikaSwell® A - 2005

Acrylic swellable joint sealing profile



An acrylic sealing profile which swells in contact with water to seal all types of joints and penetrations in concrete. It has a rectangular profile and is available in several sizes.

Uses

To seal:

- Construction joints
- Pipe and steel work penetrations through walls and floor slabs
- Construction joints in cable ducts, etc.
- Around all types of penetrations through concrete

Advantages

- Easy to apply
- Can be applied on different substrates
- Highly economical
- Swells in contact with water
- Can swell into cracks and gaps
- Long-term reliability tested
- Resistant against water and various chemical substances
- No hardening time required
- No welding required
- Adaptable to fit many different detailing tasks
- Different types and dimensions available

Colour

Oxide red

Packaging

20m Roll



SikaControl®-110 WT KE

Liquid Mass Water Repellent for Concrete



1-part polyurethane hydrophilic sealant which swells in contact with water to seal all types of construction joints and penetrations in concrete.

Benefits

- Combines with the lime of the cement to form crystallizations clogging the capillaries of the paste, making the concrete waterproof.
- Guaranteed chlorine-free.
- Has no impact on the setting time or mechanical resistance of concrete.

Uses

SikaControl®-110 WT KE is water-repellent concrete structures in the mass: foundations, rafts, tanks.etc. Concrete structures that must withstand the attack of selenite, seawater, industrial water or pure water. SikaControl®-110 WT KE can also be added neat to the mortar/concrete mix provided that the mixture is properly mixed to achieve a homogeneous consistency.

SikaControl®-110 WT KE may be combined with many other Sika® products. Note: Preliminary testing is required to prove the compatibility. Please contact Sika technical service for more information and advice.

Colour

Liquid

Packaging

5 kg and 25 kg

Plastocrete®-N

Waterproofing Concrete Admixture



Concrete admixture in liquid form that acts both as a highly effective plasticizer and a waterproofing agent.

Uses

Recommended for use in structural and mass concrete, particularly water retaining structures such as:

- Reservoirs and dams
- Sewage works
- Canals
- Culvert tunnels
- Waterproof concrete in general

Advantages

- Improved workability without increased water content
- Allows easier compaction leading to denser concrete and superior finish
- Increased strength and durability
- Reduced shrinkage
- Improved water tightness

Colour

Brown Liquid

Packaging

1kg 5kg, 25kg, 200kg & 1,000kg



Sika® Fibres

Fibsol polypropylene micro fibres for mortar and concrete



Monofilament polypropylene fibres of 12 & 18mm length for use in mortars and concrete.

Uses

- Façade render
- Concrete slabs and overlays
- Roads, pavements, and side walks
- Precast products

Advantages

- Reduces tendency for plastic and drying shrinkage cracking
- Safe and easy to use
- Improves abrasion resistance
- Reduces water migration and permeability
- Improved durability
- Explosive spalling resistance
- Increased impact resistance of young concrete

Colour

White Fibres

Packaging

900g



SikaPaver® HC-2

High performance compaction aid for semi-dry / no-slump concrete products



High-performance compaction aid for semi-dry/no-slump concrete based on the Sika® ViscoCrete® technology. The technology has been specifically developed for use in low cement content semi-dry/no-slump mixes where good surface/flanks finish, and high early strengths are required.

Uses

For all types of semi-dry/no-slump concrete which is generally used in the manufacture of machine-made concrete products associated with instant de-moulding such as:

- Block Paving (grey / coloured)
- Paving flags
- Kerbstones
- Edgings and other items for garden and landscape design
- Building blocks and bricks
- Concrete pipes and manholes
- Semi-dry hollow core slabs

Advantages

Offers substantial benefits to the producer of semi-dry/no-slump concrete products:

- Improved mould filling
- Optimised compaction process
- Reduced adhesion/stickiness between top layer concrete and pressing head/tamper
- Increased “green” strength after immediate demoulding
- More economic concrete mix designs
- Closer textured, smoother and more uniform surfaces
- Consistent product quality
- Minimized damage due to early handling
- Enhanced early and ultimate compressive and tensile strengths
- Improved durability and life expectancy

Packaging

5L, 25L, 200L & 1,000L



Antisol® E

Concrete curing compound



Liquid curing compound for preventing water loss in concrete. Read for use and simple to apply.

Uses

- Highways
- Runways and taxiways
- Aprons and hard standings
- Roof decks
- Retaining walls
- Pres-stressed beams and piers
- Irrigation canals/ channels

Advantages

- Reduces incidence of plastic cracking
- Ensure achievement of desired strenghts
- Minimises shrinkage
- Reduces dusting
- Alleviates other costly method such as hessian- watering

Colour

Liquid - Emulsified paraffin wax whitish

Packaging

5L, 25L, 200L & 1,000L



Sika® Separol GU -VP

Vegetable Oil-based shutter release agent



A vegetable oil-based shutter release agent formulated to provide easy release properties to formwork and a high-quality surface finish.

Uses

When applied to steel, plastic or timber formwork allows clean, fast, and easy striking.

Advantages

- Suitable for use on wood, metals and plastic
- Allows clean, easy striking
- Improved finish for fair faced concrete
- Reduces concrete contamination
- Economical coverage rates

Colour

Brownish liquid

Packaging

5L, 25L, 200L & 1,000L



Sikaflex® - 11 FC+

Elastic joint sealant and multipurpose adhesive



One-part, moisture-curing, elastic joint sealant and multipurpose adhesive based on polyurethane. Suitable for indoor and outdoor applications.

Uses

- Joint sealant for vertical and horizontal
- Sound proofing of pipes between concrete and sheathing.
- Sealing in metal and wood construction
- Ventilation construction
- Bonding of windowsills, ski rting boards, base boards, stair steps, covering boards, prefabricated elements, crash protection boards, and many more

Advantages

- 1-part, ready to use
- Flexible and Elastic
- Very good adhesion to most construction materials
- Good mechanical resistance
- Good weather and ageing resistance
- Indoor and outdoor applications
- Solvent free and odourless

Colour

Grey & White

Packaging

300ml Cartridge & 600ml Sausage

Sika Manual Gun

Uses

Used for dispensing any sealant packed in cartridges and sausages.



Sikaflex® PRO-3

Polyurethane sealant for floor joints and civil engineering applications



1-part, polyurethane, tough, coloured, elastic joint sealant for sealing many types of joint configurations in floors and civil engineering structures.

Uses

Horizontal and vertical interior and exterior sealing joint applications:

- Food industry
- Cleanrooms
- Sewage treatment plants
- Tunnels

Sealing horizontal and vertical joints for:

- Floors
- Pedestrian and traffic areas
- Car Park parking decks
- Warehouse and production floor areas

Advantages

- Movement capability $\pm 35\%$
- Good mechanical and chemical resistance
- Bubble-free curing
- Over-paintable
- Good adhesion to defined construction materials
- Very low emissions

Colour

Grey

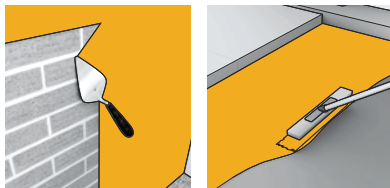
Packaging

600ml Saugage



Sika Latex®

High-performance water-resistant bonding agent and mortar improver



High quality, synthetic polymer emulsion for adding to cement mortars where good adhesion and water resistance are required.

Uses

- Thin layer patching mortars
- Renders
- Floor screeds
- Tile fixing mortars
- Concrete repair mortars
- Masonry mortars

Advantages

- Extremely good adhesion
- Greater flexibility
- Excellent water resistance
- Reduced shrinkage
- Increased abrasion resistance
- Improved chemical resistance

Colour

Milky White

Packaging

1kg 5kg, 25kg, 200kg & 1,000kg



Sika MonoTop® -610

Bonding primer and reinforcement corrosion protection cement-based slurry



Polymer modified one-component material containing active corrosion inhibitors.

Uses

- Bonding slurry on prepared concrete and mortar for Sika MonoTop® repair mortars
- Corrosion protection for steel reinforcement in concrete repair

Advantages

- Easy to use, just add water
- Excellent adhesion to concrete and steel
- Good resistance to water and chloride penetration
- Can be applied with a brush or by wet spray technique
- Good mechanical properties

Colour

Grey

Packaging

25kg



Sika MonoTop® -412 S

R4 slow setting structural repair mortar



1-component, fibre reinforced, low shrinkage repair mortar meeting the requirements of class R4 of EN 1504-3.

Uses

- Suitable for restoration work
- Repairing of spalling and damage concrete in buildings, bridges, infrastructures, and superstructure works
- Suitable for structural strengthening. Increasing the bearing capacity of the concrete structure by adding mortar
- Suitable for preserving or restoring passivity. Increasing cover with additional mortar and replacing contaminated or carbonated concrete

Advantages

- Easy to apply
- Suitable for hand and machine application
- Can be applied in thickness up to 50mm application layer
- Class R4 of EN 1504-3
- Structural repair
- Sulphate resistant
- Very low shrinkage behaviour
- A1 fire rating
- Doesn't require a bonding primer even when manually applied

Colour

Grey

Packaging

25kg



SikaGrout® -212

General purpose high performance cementitious grout



1-component, ready to mix, free flowing, low shrinkage expanding cementitious grout.

Uses

- General purpose grouting
- Machine and based plates
- Dowling reinforcing bars
- Bedding joints in pre-cast concrete sections
- Filling cavities, voids, gaps, and recesses
- Post fixings

Advantages

- Easy to use (ready to mix powder)
- Shrinkage compensated properties
- Pre-batched for quality
- Good flow characteristics
- Good bond to concrete
- Non- corrosive
- No segregation or bleeding
- Can be pumped or poured

Colour

Grey

Packaging

25kg



Sikadur® -31 CF Normal

2-part thixotropic epoxy adhesive



Solvent-free, moisture tolerant, thixotropic, structural 2-part adhesive and repair mortar, based on a combination of epoxy resins and special fillers.

Uses

As a structural adhesive and mortar for:

- Concrete elements
- Hard natural stone
- Ceramics, fibre cement
- Mortar, bricks, masonry
- Steel, Iron, Aluminium
- Polyester, Epoxy

As a structural adhesive and mortar for:

- Corners and edges
- Holes & voids filling
- Hard natural stone
- Vertical and overhead use
- Joint and crack repair / edge repair

Advantages

- Easy to mix and apply
- Suitable for dry and damp concrete surfaces
- Very good adhesion to most construction materials
- Solvent free
- High strength adhesive
- No primer need
- Good chemical resistance
- Impermeable to liquids and vapour

Packaging

1kg & 5kg kits



Sikagard®- 701 W

Alkylalkoxy Siloxane Micro-emulsion Water Repellent Impregnation



Water dilutable reactive alkylalkoxy siloxane-based impregnation, supplied as a micro-emulsion concentrate.

Uses

Impregnation for mineral substrates including concrete and cementitious render, natural and reconstituted stone, aerated concrete, brickwork (non vitrified brick), fibre cement, mineral paint coatings etc. against driving rain and water ingress.

Advantages

- Excellent penetration
- Economic and easy to use
- Reduces capillary water absorption, protection against driving rain and water ingress on vertical areas
- No change in water vapour permeability
- Non film forming
- Water dilutable

Colour

Yellowish Liquid

Packaging

5kg & 20kg



Sika MonoTop®-620

R3 pore sealer and levelling mortar



A polymer modified surfacing/finishing structural repair mortar, ready to mix, meeting the requirements of class R3 of the EN 1504-3.

Uses

- Use as a concrete/ mortar pore sealer or levelling mortar
- Thin layer render over vertical or horizontal structural elements
- Repairing of minor defects (pores and honeycombed concrete)
- Restoration of edges and joints
- Suitable for restoration work (Principle 3, method 3.1 and 3.3 of EN 1504-9)

Advantages

- Easy to apply
- Class R3 of EN 1504-3
- Adjustable consistency to improve workability
- Does not require a bonding primer even when manually applied
- Suitable for hand and machine application
- Low shrinkage behavior
- Non-corrosive
- A1 fire rating for the grey type

Colour

Grey

Packaging

25kg



SikaCeram®-205 Granite KE



DESCRIPTION

SikaCeram®-205 Granite KE is a high performance flexible cementitious adhesive, supplied ready to use with the addition of water. It can be used for bonding ceramic tiles in internal and external situations, for vertical as well as horizontal applications. It can be used in layers up to 10 mm thick. SikaCeram®-205 Granite KE is suitable for all kinds of tiles for inside and outside application for residential and medium load areas.

EN 12004 Class C2TE.

USES

SikaCeram®-205 Granite KE can be used for bonding ceramic tiles in a continuous thin layer, up to 10 mm. As it has high adhesive strength and flexibility, it can be used in situations where traditional adhesives are not suitable due to the type of tile or the substrate etc.

ADVANTAGES

- Very good adhesion to most substrates
- Easy to use with excellent workability and thixotropic consistency, just add water
- Good bond strengths
- Non Toxic
- Weather and water resistance
- Suitable for indoor and outdoor applications
- High flexibility



SikaCeram®-105 Porcelain KE



DESCRIPTION

SikaCeram®-105 Porcelain KE is a polymer modified, cement based, improved adhesive for ceramic and porcelain tiles. It can be used in layers up to 5 mm thick and is suitable for all kind of tiles for inside and outside application for residential and medium load areas.

USES

- Suitable for bonding of high absorption ceramic tiles, earthenware, extruded and refined porcelain tiles.
- Suitable for bonding of large size tiles used in industrial environment, wet areas, swimming pools, facades.
- Suitable for bathrooms, kitchens, balconies, terraces, etc.
- Indoor and outdoor application over concrete, cement mortars, bricks and plaster.
- For horizontal and vertical areas Suitable for moisture tolerant natural stone Suitable to tile directly on various, Sika waterproofing products.

Advantages

- Very good adhesion
- Easy to use with excellent workability and thixotropic consistency
- Good bond strengths
- Non-Toxic
- No vertical slip, high slump resistance and grab Suitable for all types of Ceramic and Porcelain tiles



SikaCeram®-80 Ceramic KE



DESCRIPTION

SikaCeram®-80 Ceramic KE is a cementitious, non shrink, polymer containing thin bed tile adhesive used for permanent fixing of tiles. It is ready to use with the addition of water. It can be used for bonding of tiles internally (vertical and horizontal).

USES

SikaCeram®-80 Ceramic KE is suitable for bonding the following types of high absorption tiles :

- Ceramic
- All types of high absorption ceramic tiles except those with very low absorption, such as glazed stoneware.
- Can be used on substrates including Concrete, Cement Mortars and Bricks

CHARACTERISTICS / ADVANTAGES

- Very good adhesion
- Easy to use with excellent workability Thixotropic consistency
- Good bond strengths
- Non Toxic



SikaCeram®-650 Tile Grout KE



DESCRIPTION

- SikaCeram®-650 Tile Grout KE is a high performance flexible cement based tile grout suitable for most tiling applications including wet & dry areas, kitchens, outdoor areas including submerged applications such as pools and spas and commercial applications.
- SikaCeram®-650 Tile Grout KE is mould and bacteria resistant.
- SikaCeram®-650 Tile Grout KE hydrophobic nature repels water and is resistant to staining.
- The unique SikaCeram®-650 Tile Grout KE is resistant to efflorescence and provides excellent colour consistency with a smooth finish.
- SikaCeram®-650 Tile Grout KE is suitable for joints 1 - 8mm wide

USES

SikaCeram®-650 Tile Grout KE is suitable for use with most common tile such as natural stone, marble, granite, limestone, porcelain, and mosaics.

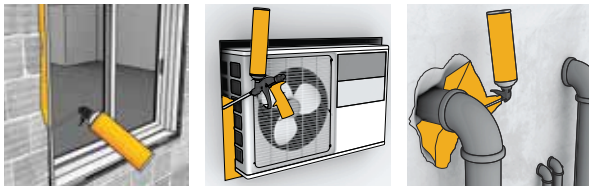
ADVANTAGES

- Mold & Stain resistant
- Hydrophobic - water repellent
- Colour consistency
- Resistant to Efflorescence
- Hard wearing / high resistance to abrasion
- Smooth finish
- Easy to use



Sika Boom® P

Expansive polyurethane fixing foam for filling and insulating



Fast curing polyurethane foam made for easy application with plastic nozzle.

Uses

- Fixing, insulating and filling connection joints around windows and door frames, pipe entries, air-conditioning vents, and electrical equipment
- Insulation against noise, cold and draughts after one single application

Advantages

- 1-component
- Easy application with nozzle
- High expanding rate
- Fast curing
- Very good thermal insulation
- Effective sound dampening
- Mould-proof, water-proof, over paintable
- Cured foam dries rigid and can be trimmed, shaped and sanded
- HFC-free

Colour

White

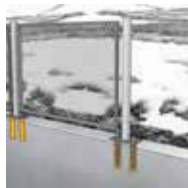
Packaging

750ml Cartridge



Sika AnchorFix® -1

Fast curing anchoring adhesive



Solvent and styrene free based two-part polyester anchoring adhesive.

Uses

- Rebars / reinforcing steel
- Threaded rods
- Bolts and special fastening systems
- Concrete
- Hollow and solid masonry

Advantages

- Fast curing
- Standard guns can be used
- Can be used at low temperatures
- High load capacity
- ETA Approval available
- Non-sag, even overhead
- Styrene-free
- Low odour and wastage

Colour

Light Grey & Biege

Packaging

300ml Cartridge



Sikafloor® - 3 QuartzTop

Mineral dry shake floor hardener



One part, pre-blended, mineral dry shake hardener for concrete comprising of cement, specially selected quartz mineral aggregates and admixtures.

Uses

- Provides a hard wearing, mineral dry shake topping for monolithic floors
- For warehouses, factories, shopping malls, public areas, restaurants and museums

Advantages

- Good wear resistance rating
- Impact resistance
- Cost effective surface hardener
- Dust proof
- Easy cleaning
- Increased resistance to oils and grease
- Quality assured factory blending
- Suppresses superficial fibres in concrete

Colour

Grey

Packaging

25kg



Purigo® -5S

Concrete floor dust-proofer and hardener



A ready-to-use surface hardener and dust proofer, based on sodium silicate, which reacts chemically to produce a hard, dust-free finish.

Uses

- Used on both new and old concrete floors
- It is not suitable for natural stone

Advantages

- Ready -to-use
- Easy to apply
- Dust-free finish
- Good penetration
- Hardens concrete surfaces

Colour

Clear Liquid

Packaging

5L, 25L, 200L & 1,000L



KNOW-HOW FROM SITE TO SHELF



No matter how big or small your projects are, trust Sika to deliver superior product performance, with over 100 years of experience. We offer customers advantage of comprehensive single-source supply and universal quality.

Sika products are available in all leading hardware stores and builders' merchants.

OUR EXPERIENCE - YOUR BENEFIT!

Sika Kenya Limited

Mudher Industrial Complex, Mombasa Road

P.O Box 38645 - 00623 Nairobi, Kenya

Mobile: +254 711 140 234 / +254 786 140 234

Email: sales@ke.sika.com

Website: ken.sika.com

BUILDING TRUST

